



Habitat Hunt Answer Key



Anhinga Bird (A large, dark water bird with a long, thin neck; long-thin, pointed bill; and a long tail)
Answer: Shark river slough

Bladderwort (A carnivorous plant that lacks roots and has floating stems; small bladders are produced along this stem; it produces yellow flower)
Answer: The sawgrass marsh

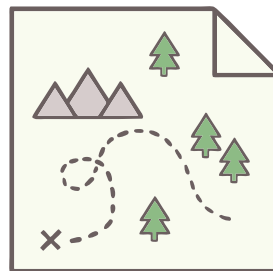
Crocodile (A large amphibious reptile).
Answer: The mangrove swamps



Tiger Swallowtail Butterfly (Identified by black tiger stripes; females are yellow with blue on their tails)
Answer: The hardwood hammocks



Wood Duck (Wood ducks have a unique shaped head; they have red eyes and bold colors)
Answer: The cypress swamps

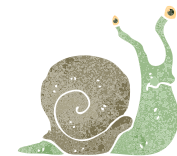


Yellow Rat Snake
Answer: The pinelands



Gumbo Limbo Tree (A tree that has its trunk and branches covered with a smooth, peeling, coppery-colored bark)
Answer: The hardwood hammocks

Tree Snails
Answer: The hardwood hammocks



Pickrel Weed (An aquatic plant that produces a large spike of purple flowers)
Answer: The shark river sloughs



White Water Lily
Answer: The sawgrass marsh





Habitat Hunt Answer Key



Snowy Egret (Small White Heron)

Answer: The mangrove swamps



Saw Palmetto

Answer: The pinelands and the hardwood hammocks

East Indigo Snake (Black snake having red tones underneath)

Answer: The sawgrass marsh



Buttonbush (A large shrub that produces round, white flowers).

Answer: The pinelands

Green Tree Snake

Answer: The mangrove swamp



Strangler Fig A fig that has roots that gradually wrap around the host tree; the roots widen and slowly form a lattice work that surrounds the tree, usually killing it

Answer: The hardwood hammocks



Buckeye

Butterfly (Mostly brown with one large and one small blackish-blue eye spot on each wing)

Answer: The mangrove swamps

Bromeliads (Air plants that have long, silvery-green leaves; they need no soil and can grow on trees; they produce a pinkish bloom)

Answer: The hardwood hammocks

Ghost Orchid (Has delicate white flower petals; it gets its name from the nocturnal movement of the flower, which resembles a ghost)

Answer: The cypress swamps



Samurai Face Stink Bug (This stink bug looks like it has a human face of a samurai)

Answer: The mangrove swamps



Glossy Ibis (A long-legged, long-billed bird boasting stunning colors; deep maroon, emerald, bronze and violet)

Answer: The sawgrass marsh

